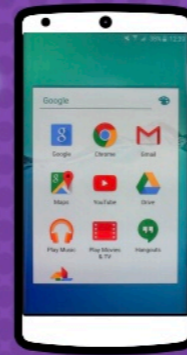

GOOGLE CLASSROOM

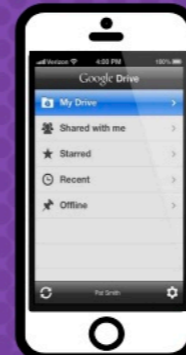
For Parents

ACCESS

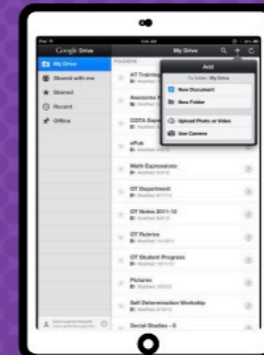
ANYWHERE



ANDROID



IPHONE



TABLET



DESKTOP

GOOGLE CLASSROOM WORKS ON ANY DEVICE



GOOGLE APPS

allow you to edit Google
assignments from
any device that is connected
to the internet!



Download on the
App Store



GET IT ON
Google Play

IF USING A LAPTOP/PC THERE IS INSTANT ACCESS THROUGH GLOW ,
IF USING A MOBILE DEVICE THE APPS ARE FREE TO DOWNLOAD.



Sign In

 Remember my username

Sign in

[Forgotten your password?](#) - [Need A Glow Login?](#)

Only Glow users are allowed to access this service. If you do not have a Glow username and password then you may be committing an offence by trying to gain access to this service.

@GlowScot Tweets



Inverbrothock PS @InverbrothPS · 11 Mar, 9:58 am

We have arrived! [@KinrossPrimaryS](#) so excited to hear all of the presentations [#ttm20](#) [@GlowScot](#) [@PrometheanUKI...](#) <https://t.co/bws6MEy5V8>

[Expand](#)



Education Scotland @EducationScot · 10 Mar, 4:01 pm

Last year National Digital Learning Week saw over 200 activities taking place across 5 days in schools all over Sco...

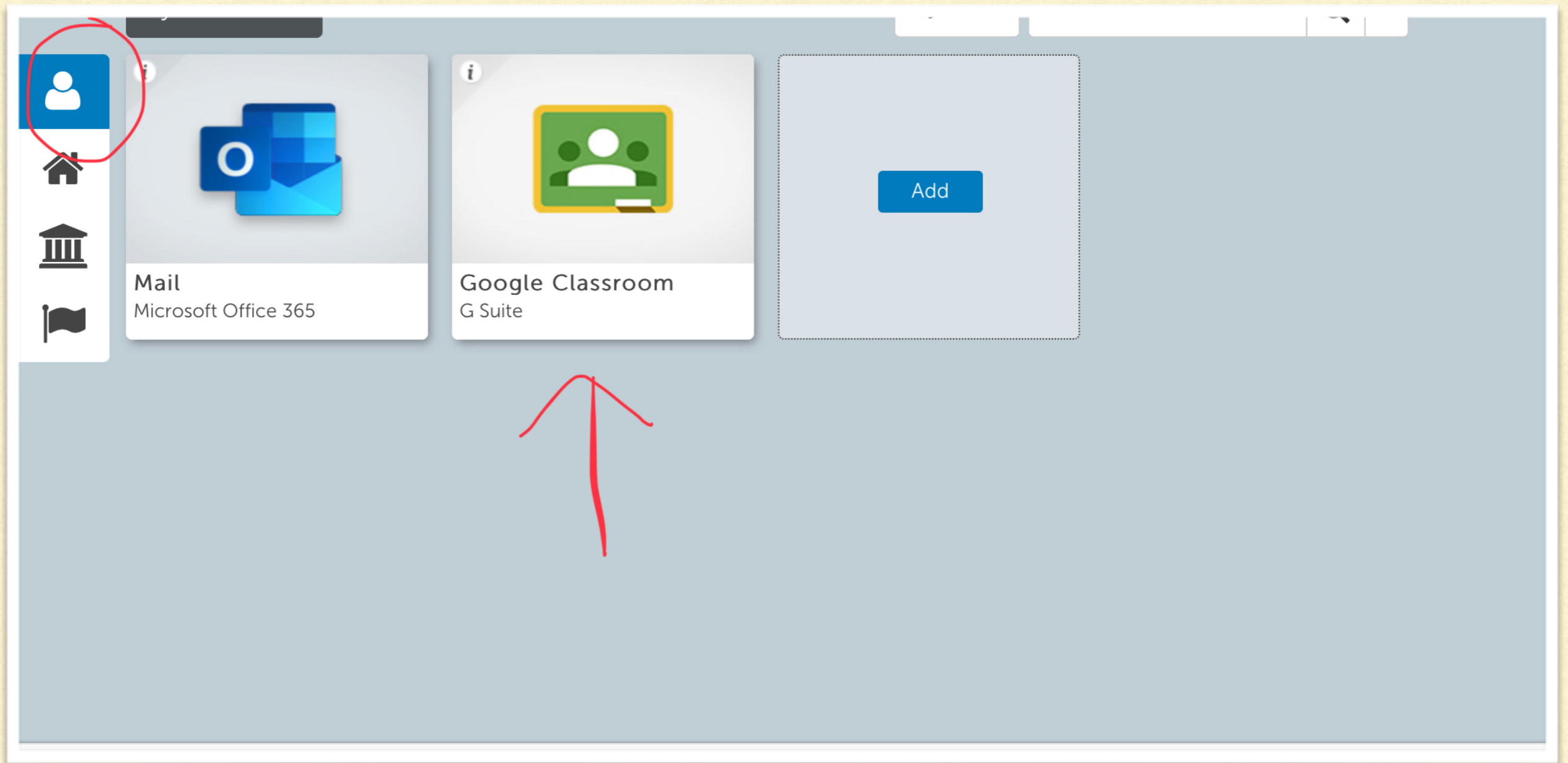
<https://t.co/Em5ytafFLN>

[Expand](#)



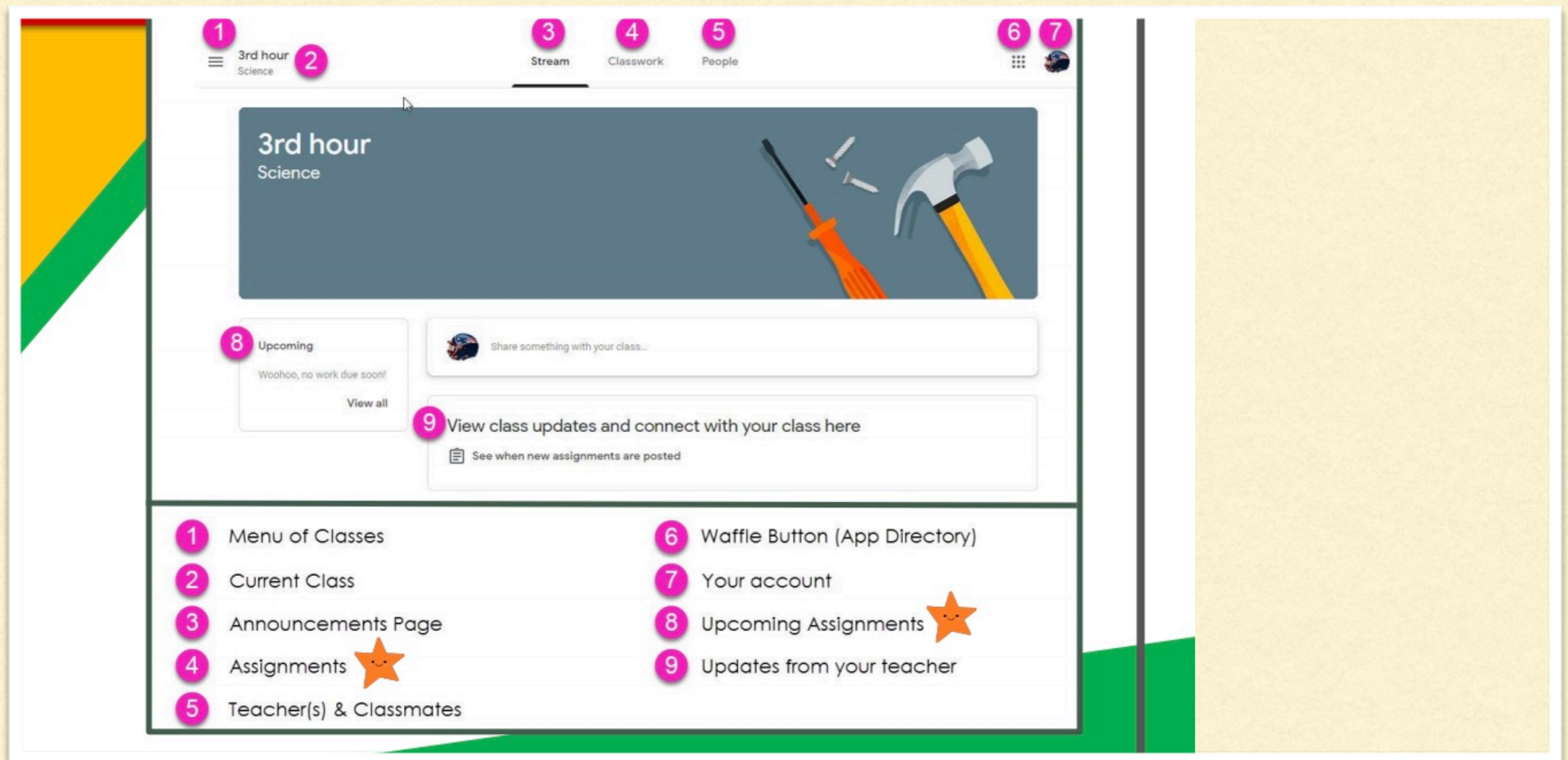
FIND THE GLOW WEBSITE

<https://sts.platform.rmunify.com/account/signin/glow>



LOGIN USING CHILD'S DETAILS

Click on their own launchpad and then click on the Google classroom tile.



THIS IS A SUMMARY OF THE DIFFERENT AREAS WITHIN THE FIRST SCREEN.

The screenshot displays the Google Classroom 'Classwork' interface. At the top, the 'Classwork' tab is selected. The sidebar on the left lists 'All topics', 'Benchmark Tests', 'Daily Lesson Files', 'Assessments', 'Back to School', and 'Resources'. The main content area shows a 'Benchmark Tests' section with a 'STAR Math Benchmark Test - BOY' due on Sep 3. Below this is a 'Daily Lesson Files' section with an assignment titled 'For the Week of September 2 - 6' due today. The assignment details include a list of daily topics: Monday (NO SCHOOL), Tuesday (Multistep Equations), Wednesday (Variables on Both Sides), Thursday (Infinite & No Solution Equations), and Friday (Algebraic Proportions). Below the list are four PDF files: 'Day 1 - Multistep Equatio...', 'Day 2 - Variables on Both...', 'Day 3 - Infinite & No Solu...', and 'Day 4 - Algebraic Propor...'. A 'View Assignment' button is at the bottom.

| | | | | | |
|---|-----------------|---|---------------------|----|--------------------------|
| 1 | Classwork Tab | 5 | Topics available | 9 | Assignment Status |
| 2 | See your Grades | 6 | Topic Headings | 10 | Attached files/links |
| 3 | See Due Dates | 7 | Assignment Title | 11 | Click to view assignment |
| 4 | View your files | 8 | Assignment Due Date | | |

THIS IS AN EXAMPLE OF WHAT THE CLASS WORK AREA LOOKS LIKE.



Test 1

100 points



M Grant 13:22

Hopefully you have now logged into Google Classrooms. To let me know that you are now part of P.6/7 online, please submit a Google document with your name on it and a quick update on what you've been up to. Feel free to experiment with the editing functions - font, colours etc.

Class comments

Your work

Assigned

+ Add or create

Mark as Done

Private comments



Add private comment...



CLICK ON THE ASSIGNMENT THEN CLICK ADD OR CREATE TO START YOUR TASK.

Test 1

100 points

M Grant 13:22

Hopefully you have now logged into Google Classrooms. To let me know that you are now part of P.6/7 online, please submit a Google document with your name on it and a quick update on what you've been up to. Feel free to experiment with the editing functions - font, colours etc.

Class comments

Your work

Assigned

+ Add or create

 Google Drive

 Link

 File

Create new

 Docs

 Slides

 Sheets

 Drawings

DEPENDING ON THE TASK YOU MAY NEED TO TYPE A DOCUMENT OR ATTACH A FILE LIKE A PHOTO.

Test 1

100 points



M Grant 13:22

Hopefully you have now logged into Google Classrooms. To let me know that you are now part of P.6/7 online, please submit a Google document with your name and class up to. Feel free to experiment with the editing functions.

Class comments

Your work

Assigned


 D Grant - Test 1
Google Docs 

+ Add or create

Hand in

Hand in your work?

1 attachment will be submitted for "Test 1".

 D Grant - Test 1

Cancel

Hand in

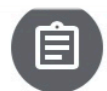
Private comments



Add private comment...



ONCE WORK IS COMPLETED, CLICK 'HAND IN' FOR MOBILE DEVICES, 'TURN IN' FOR PC/LAPTOP.



Test 1

100 points



M Grant 13:22

Hopefully you have now logged into Google Classrooms. To let me know that you are now part of P.6/7 online, please submit a Google document with your name on it and a quick update on what you've been up to. Feel free to experiment with the editing functions - font, colours etc.

Class comments

Your work

Handed in



D Grant - Test 1
Google Docs

Unsubmit

Private comments



Add private comment...



IT THEN SHOWS WORK HAS BEEN HANDED IN FOR THAT SPECIFIC ASSIGNMENT. TEACHERS WILL THEN BE ABLE TO SEE IT.